

20-30-40-50 (T4 Interim)

NEW

X5



McCORMICK



McCORMICK

New X5 T4i Series

Launched in 2012, the X50 tractor range now returns to the market with the denomination X5 in line with the new model designations recently adopted by McCormick for its tractor families.

The new X5 tractor series offers a fully revamped four-post cab with flat-deck platform and rear hinged doors that provides ease of access to the driver's seat and unequalled all-round visibility.

Designed with painstaking attention to detail, the cab interior features ergonomically-arranged controls for maximum comfort and ease of operation. The telescopic tilt-adjustable steering wheel tilts with the instrument panel, allowing the driver to constantly monitor the tractor operation. The air-conditioning system has been improved by relocating the filters into the rear posts for easier cleaning. As a result, the cab roof could be redesigned with a slimmer profile, allowing the tractor overall height to be reduced.



Other improvements include increased hydraulic flow (63 l/min + 30 l/min) and a larger fuel tank with a storage capacity of 120 litres.

The 12+12 transmission with power shuttle and shuttle modulation control has now been upgraded with the proven 36+12 Xtrashift transmission with 3-stage powershift which provides a top speed of 40 km/h at reduced engine rpm.

The X6 tractor range comprises four models: the X5.20, X5.30, X5.40 and X5.50.

All models are powered by the new Perkins 854E-E34TA engines. Equipped with two-valve technology, common rail injection system and exhaust gas recirculation system (EGR), these 3.4-liter, four-cylinder, turbo-aftercooled engines meet the Tier 4 Interim emission regulations and offer power ratings from 85 to 113 hp. The first three models in the range come standard with Power Plus system.

The X5 tractors are also available with iso-mounted platform.



A

ENGINES

The X5 tractors are powered by the new Perkins 854E-E34TA series four-cylinder turbo-aftercooled engines with power ratings from 85 to 113 hp. These 3.4L engines feature two-valve cylinder heads and electronic common rail injection system and utilize an innovative exhaust gas recirculation system (EGR) in conjunction with a diesel particulate filter (DPF) to meet the Tier 4 Interim emission regulations. The electronic engine management, combined with the Power Plus system, allows the engine to automatically deliver extra power and torque to handle demanding PTO and transport applications. Fully reshaped to reflect the new McCormick family styling, the tilt-up hood opens wide to provide easy access to the engine compartment for service and maintenance and for easy cleaning of coolers in dusty conditions (fig. A).



B

FRONT AXLE

The front 4WD axle with electrohydraulic engagement and 55-degree steering angle ensures high ground clearance and optimum manoeuvrability (fig. B). The combined action of the front and rear wet disc brakes provides efficient braking on all four wheels. Featuring a full differential lock with electrohydraulic engagement, the front axle provides maximum traction even in the toughest ground conditions.

FRONT HITCH AND PTO

The Cat. 2 three-point hitch features raise/lower and float position control functions and provides a lift capacity of 2100 kg. The 1000-rpm PTO is electrohydraulically engaged via a pushbutton. The front hitch and PTO have been specially designed to enhance the versatility of the X5 tractor range, making it ideal for the use of front and rear implement combinations.

TRANSMISSION

The X5 features as standard a Speed Four transmission with a hydraulic power shuttle providing three ranges with four speeds each. The basic gearbox can be combined with an Xtrashift transmission with three powershift ranges (high, medium, low) that can be shifted on-the-go using the green buttons integrated into the gear lever (fig. C). With the power shuttle (fig. D), this configuration provides 36 forward and 12 reverse speeds. A creeper unit is available as an option to increase the total number of speeds to 48 forward and 16 reverse. The De-Clutch orange button on the gear lever (fig. C) and the power shuttle lever adjacent to the steering wheel (fig. D) allow the driver to change gear and shift from forward to reverse without using the clutch pedal. The power shuttle is equipped with shuttle modulation control. This feature, fitted on the control panel (fig. E), adjusts the power shuttle response to suit the operating conditions.



C



E



D

NEW INSTRUMENT PANEL AND STEERING WHEEL

Stylish and well lighted, the instrument panel tilts with the steering wheel, allowing the driver to constantly monitor the tractor operation (fig. D).



KEY FEATURES & BENEFITS

- › ENGINES MEETING TIER 4 INTERIM EMISSION REGULATIONS AND ENGINE POWER MANAGEMENT WITH POWER PLUS SYSTEM
- › TILT-UP HOOD FOR SIMPLIFIED ENGINE MAINTENANCE AND COOLER CLEANING
- › ELECTROHYDRAULIC XTRASHIFT TRANSMISSION WITH 3 POWERSHIFT RANGES (H-M-L) AND UP TO 46FWD+16REV SPEEDS WITH CREEPER
- › NEW CAB WITH ALL-ROUND VISIBILITY AND SLIM-LINE ROOF FOR REDUCED TRACTOR HEIGHT
- › PTO WITH ELECTROHYDRAULIC CONTROL AND UP TO 3 SPEEDS
- › ELECTRONIC POWER LIFT WITH UP TO 4750 KG LIFT CAPACITY



F

POWER LIFT

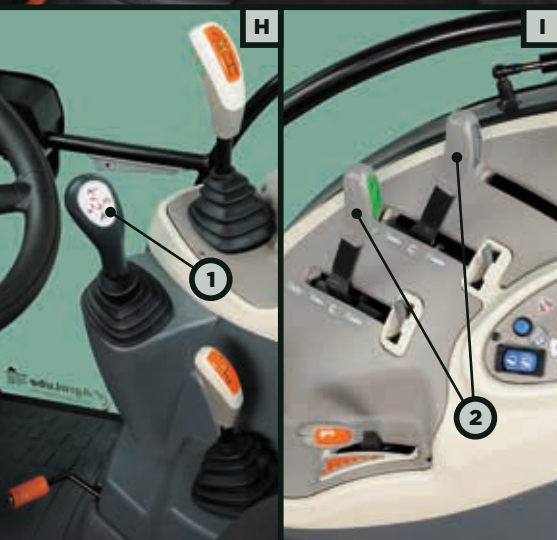
With the controls conveniently located on the right-hand console (fig. G), the new electronically-controlled power lift provides all main functions and regulations allowing fingertip control of the implement. The Cat 2 three-point linkage (fig. F) features lower-link draft control for easy operation and provides a maximum lift capacity of 4750 kg.



G

PTO

The 1³/₈ PTO offers a choice of two speeds: 540/750 rpm or, optionally, 540/1000 rpm. An additional 3-speed PTO providing 540/750/1000 rpm is available as an option for greater versatility. Hydraulically operated by push-button (P) (fig. G), the multi-disc wet clutch allows for a modulated PTO engagement, thus ensuring a smooth start-up of the implement.



I

HYDRAULIC SYSTEM

The new hydraulic system provides a maximum total flow of 93 l/min (power lift + steering). The system features four remote valves with lever controls conveniently placed to the driver's right, ensuring versatile and efficient use of implements. Two of the valves are controlled by a joystick (1) (fig. H) and operate either a front loader or a front power lift, while the other two are controlled by levers (2) (fig. I).



L

CAB

The new Deluxe Slim cab features a four-post design with flat-deck platform and rear hinged doors for ease of access and unequalled allround visibility. The cab interior is designed with painstaking attention to every detail. The fully-adjustable driving position features ergonomically-arranged controls and a telescopic tilt-adjustable steering column which tilts with the instrument panel, allowing the driver to constantly monitor the tractor operation. Optionally, the operator station can be fitted with an air suspension seat for extra comfort. The air-conditioning system has been improved by relocating the filters into the rear posts for easier cleaning. As a result, the cab roof could be redesigned with a slimmer profile allowing the tractor overall height to be reduced. The cab is totally isolated from the outside environment through tinted glass windows and an efficient pressurisation system. Both the front and rear windscreens can be opened to provide natural ventilation. A clear roof hatch provides extra visibility for loader work and four powerful halogen lights ensure excellent illumination for night work (fig. L). The version with iso-mounted platform is equally comfortable and ergonomically designed as the cab version .

		X5.20		X5.30		X5.40		X5.50	
		Synchro Shuttle	Power Shuttle	Synchro Shuttle	Power Shuttle	Synchro Shuttle	Power Shuttle	Synchro Shuttle	Power Shuttle
ENGINE									
PERKINS TIER4 INTERIM DIRECT-INJECTION ENGINE		854E-E34TA		854E-E34TA		854E-E34TA		854E-E34TA	
MAX. POWER (ISO) (SYNCHRO SHUTTLE VERSION)	HP/KW	85 / 62.5		95 / 70		102 / 75		113 / 83	
MAX. POWER (ISO) (POWER SHUTTLE VERSION)	HP/KW	88.5 / 65		95 / 70		105 / 77		113 / 83	
MAX. POWER WITH POWER PLUS (ISO) (XTRASHIFT TRANSMISSION)	HP/KW	95 / 70		102 / 75		113 / 83		—	
RATED SPEED	RPM	2200		2200		2200		2200	
MAX. TORQUE (SYNCHRO SHUTTLE VERSION)	LB. (NM)	260 (354)		290 (395)		310 (420)		330 (450)	
MAX. TORQUE (POWER SHUTTLE VERSION)	LB. (NM)	270 (368)		290 (395)		318 (432)		330 (450)	
MAX TORQUE WITH POWER PLUS (XTRASHIFT TRANSMISSION)	LB. (NM)	290 (395)		310 (420)		330 (450)		—	
MAX. TORQUE SPEED	RPM	1400		1400		1400		1400	
BORE/STROKE	IN. (MM)	3.9/4.3 (99/110)		3.9/4.3 (99/110)		3.9/4.3 (99/110)		3.9/4.3 (99/110)	
DISPLACEMENT / CYLINDERS	CU. IN. (CM³)	207 (3400) /4 TA		207 (3400) /4 TA		207 (3400) /4 TA		207 (3400) /4 TA	
COMPRESSION RATIO		17:1		17:1		17:1		17:1	
WATER COOLING		●		●		●		●	
DRY AIR FILTER		●		●		●		●	
FUEL TANK CAPACITY PLATFORM/CAB	GAL. (LT)	27.2 (102) / 32 (120)		27.2 (102) / 32 (120)		27.2 (102) / 32 (120)		27.2 (102) / 32 (120)	
CLUTCH									
INDEPENDENT DRY SINGLE-PLATE CLUTCH	IN. (MM)	13”(330)		13”(330)		13”(330)		13”(330)	
MECHANICALLY OPERATED		●		●		●		●	
MULTI-DISC WET CLUTCH		●		●		●		●	
DECLUTCH CONTROL: BUTTON-OPERATED CLUTCH		●		●		●		●	
TRANSMISSION									
SYNCHRO SHUTTLE + SPEED FOUR: 12FWD+12REV (2WD ONLY)		●		●		●		—	
SYNCHRO SHUTTLE + SPEED FOUR + CREEPER: 16FWD+16REV (2WD ONLY)		○		○		○		—	
SYNCHRO SHUTTLE + SPEED FOUR + OVERDRIVE: 24FWD+12REV (40KM/H) (PLAT ONLY)		●		●		●		●	
SYNCHRO SHUTTLE + SPEED FOUR: 12FWD+12REV (40KM/H) (CAB ONLY)		●		●		●		●	
POWER SHUTTLE + SPEED FOUR: 12FWD+12REV		●		●		●		●	
POWER SHUTTLE + SPEED FOUR + CREEPER: 16FWD+16REV		○		○		○		○	
POWER SHUTTLE + SPEED FOUR + XTRASHIFT: 36FWD+12REV (40KM/H)		○		○		○		○	
POWER SHUTTLE + SPEED FOUR + XTRASHIFT + CREEPER: 48FWD+16REV (40KM/H)		○		○		○		○	
ECO FORTY (40 KM/H) AT REDUCED ENGINE SPEED (XTRASHIFT TRANSMISSION)		○		○		○		○	
SHUTTLE MODULATION CONTROL: POTENTIOMETER FOR ADJUSTMENT OF POWER SHUTTLE RESPONSE		●		●		●		●	
PARK LOCK		○		○		○		○	
POWER TAKE-OFF									
OIL-IMMERSED MULTI-DISC HYDRA PTO		●		●		●		●	
ELECTROHYDRAULIC CONTROL		●		●		●		●	
2 SPEEDS 540/750 RPM		●		●		●		●	
2 SPEEDS 540/1000 RPM		○		○		○		○	
3 SPEEDS 540/750/1000 RPM		○		○		○		○	
1”3/8 (34.9 MM) PTO SHAFT WITH 6 SPLINES		●		●		●		●	
GROUND SPEED PTO		○		○		○		○	
NET PTO POWER (ISO) SYNCHRO SHUTTLE VERSION (POWER SHUTTLE VERSION)	HP/KW	71.5 / 52.5		81.5 / 60		88 / 64.5		97.5 / 71.5 (96 / 70.5)	
NET PTO POWER WITH POWER PLUS (ISO) (XTRASHIFT TRANSMISSION)	HP/KW	80 / 59		86.5 / 63.5		96 / 70.5		—	
FRIONT 4WD AXLE									
ELECTROHYDRAULIC 4WD ENGAGEMENT		●		●		●		●	
MAX. STEERING ANGLE		55°		55°		55°		55°	
TWIN-LOCK ELECTROHYDRAULIC DIFF-LOCKS		●		●		●		●	
BRAKES									
OIL-IMMERSED MULTI-DISC REAR BRAKES, 10 DISCS		●		●		●		●	
OIL-IMMERSED MULTI-DISC FRONT BRAKES, 4 DISCS		●		●		●		●	
IBS - INTEGRAL BRAKING SYSTEM		●		●		●		●	
Key: ● standard ○ option - not available									

Key: ● standard ○ option - not available

		X5.20		X5.30		X5.40		X5.50	
		Synchro Shuttle	Power Shuttle	Synchro Shuttle	Power Shuttle	Synchro Shuttle	Power Shuttle	Synchro Shuttle	Power Shuttle
HYDRAULIC POWER LIFT									
DRAFT, POSITION, INTERMIX AND FLOAT CONTROL		•		•		•		•	
MECHANICALLY OPERATED		•		•		•		•	
ERGONOMIC LIFT SYSTEM +REAR CONTROL LEVER		○		○		○		○	
ELECTRONICALLY-OPERATED (ONLY CAB)		○		○		○		○	
LIFTING CAPACITY WITH 2 ASSISTOR RAMS	LB. (KG)	10450 (4750)		10450 (4750)		10450 (4750)		10450 (4750)	
MAX. OPERATING PRESSURE	PSI (BAR)	2600 (180)		2600 (180)		2600 (180)		2600 (180)	
HYDRAULIC FLOW @ REMOTE	GPM (LT/MIN)	16.6 (63)		16.6 (63)		16.6 (63)		16.6 (63)	
TOTAL HYDRAULIC PUMP FLOW (HITCH + STEERING)	GPM (LT/MIN)	24.5+7.9 (63+30)		24.5+7.9 (63+30)		24.5+7.9 (63+30)		24.5+7.9 (63+30)	
CAT 2 THREE-POINT LINKAGE		•		•		•		•	
STD AUXILIARY VALVES NR° STD/OPT		2 / 4		2 / 4		2 / 4		2 / 4	
FRONT HITCH AND FRONT PTO	LIFT CAPACITY LB. (KG)	4620 (2100) ○		4620 (2100) ○		4620 (2100) ○		4620 (2100) ○	
CAB AND DRIVING SEAT									
DELUXE SLIM CAB / RADIO ADAPTOR		•		•		•		•	
HEATING / VENTILATION		•		•		•		•	
AIR-CONDITIONING		•		•		•		•	
AIR SUSPENSION SEAT		○	•	○	•	○	•	○	•
ISO-MOUNTED PLATFORM		○		○		○		○	
DIMENSIONS AND WEIGHTS (IN RUNNING ORDER)									
A - HEIGHT OVER ROLL BAR	IN. (MM)	102.5 (2610)		102.5 (2610)		102.5 (2610)		102.5 (2610)	
A - HEIGHT OVER CAB	IN. (MM)	99/101.5 (2523/2582)		99/101.5 (2523/2582)		99/101.5 (2523/2582)		99/101.5 (2523/2582)	
B - WHEELBASE 2WD/4WD	IN. (MM)	87.5/91 (2223/2320)		87.5/91 (2223/2320)		87.5/91 (2223/2320)		—/91 (—/2320)	
C - LENGTH (WITH BALLAST)	IN. (MM)	173.8 (4414)		173.8 (4414)		173.8 (4414)		173.8 (4414)	
D - GROUND CLEARANCE 4WD	IN. (MM)	13.5/16 (350/409)		13.5/16 (350/409)		13.5/16 (350/409)		13.5/16 (350/409)	
E - MIN. WIDTH	IN. (MM)	83.5 (2121)		83.5 (2121)		83.5 (2121)		83.5 (2121)	
F - FRONT TRACK	IN. (MM)	56/77.5 (1427/1967)		56/77.5 (1427/1967)		56/77.5 (1427/1967)		56/77.5 (1427/1967)	
G - REAR TRACK	IN. (MM)	65.5/79 (1292/2008)		65.5/79 (1292/2008)		65.5/79 (1292/2008)		65.5/79 (1292/2008)	
WEIGHT (WITHOUT BALLAST) 4WD - CAB 550 LB (250 KG)	LB. (KG)	8030 (3650)		8030 (3650)		8030 (3650)		8030 (3650)	

Key: • standard ○ option – not available

